

STAGE
3



STAGE
2



STAGE
1



In-Dash mounting not illustrated.

LARGEST SCALE

90° Electric Gauges
270° Mechanical Gauges

VERTICAL POINTER SWEEP for quicker dial interpretation.

BEST ELECTRIC MECHANISM for scale accuracy, linearity and reliability.

BEST MECHANICAL MECHANISM for scale accuracy, linearity and reliability.

PATENTED, TRANSOPTIC DIAL combines front and back lighting for improved night-time readability with no hot spots.

STYLED MODULES LET YOU DESIGN new, creative instrument panels and clusters.

WIDE RANGE OF INSTRUMENTS for the completely instrumented car.

GAUGE SPECIFICATIONS

CASE SIZE 2 $\frac{1}{16}$ " dia.

CASE MATERIAL Steel

APPEARANCE OF FACE DIAL

Styling Vertical Pointer Sweep
Background Black
Numerals White
Accents Yellow and White
Pointer White

BEZEL Non-Reflective Black with Satin Trim

LIGHTING Internal Transoptic

MECHANISMS Electric—Bi-Torque, 12-Volt, Neg. Grd.
Mechanical—Accustat



STAGE 3

OIL OR FUEL PRESSURE

Electric Oil Pressure Gauge—
12V, Neg. Grd. 0-100 PSI.
Transoptic Illumination

Wire and Terminals

Lighting Kit

Mounting Clamp and Instructions **283-L**

Requires an Electrical Sender: **279-B**

Mechanical Oil Pressure Gauge
0-100 PSI, Transoptic Illumination,
7/2" Tubing with Fittings

Lighting Kit

Mounting Kit

Instruction Sheet **283-D**

As above

Fuel Pressure 0-15 PSI **283-E**

WATER TEMPERATURE

Electric Water Temperature Gauge—
12V, Neg. Grd. 100°-280°;
Transoptic Illumination

Wire and Terminals

Lighting Kit

Mounting Clamp and Instructions **283-J**

Requires an Electrical Sender:
See page 30

Mechanical Water Temperature Gauge
100°-280°, Transoptic Lighting,
7/2" tubing with 1/2" Adapter Nut

Lighting Kit

Mounting Clamp and Instructions **283-B**

AMPERES

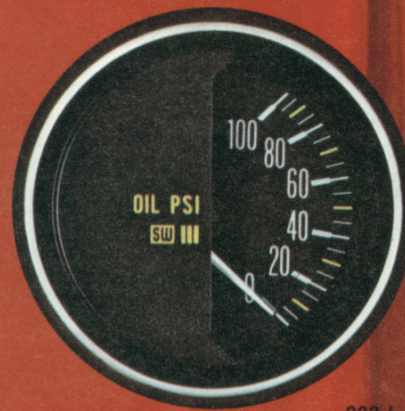
Ammeter 60-0-60 ADC,
Transoptic Illumination

Lighting Kit

Mounting Clamp

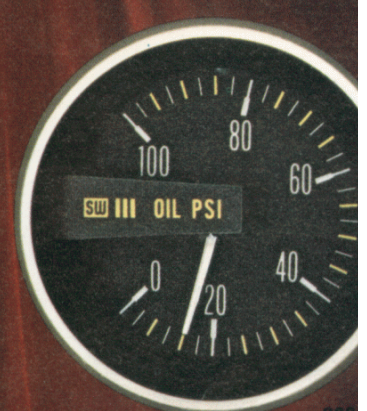
Instruction Sheet **283-A**

ELECTRICAL



283-L

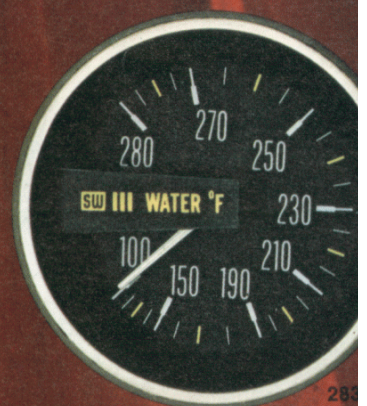
MECHANICAL



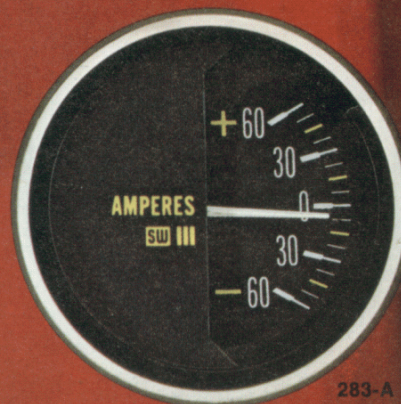
283-D



283-J



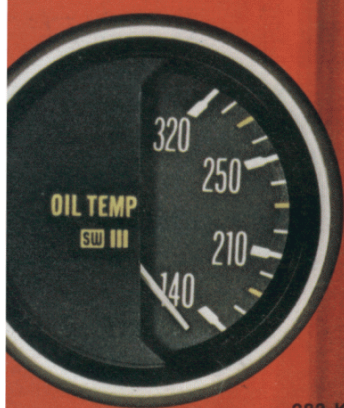
283-B



283-A

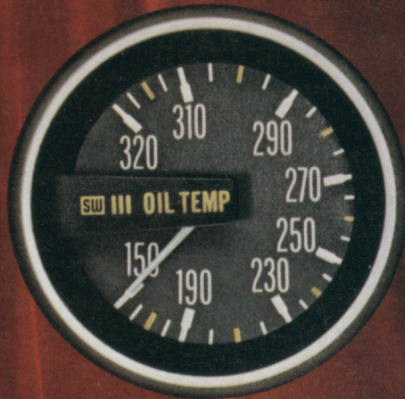
STAGE 3

ELECTRICAL

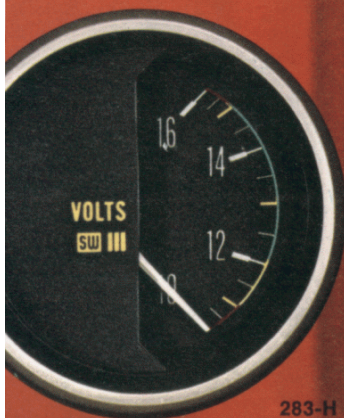


283-K

MECHANICAL



283-C



283-H



OIL TEMPERATURE

Electric Oil Temperature Gauge—
12V, Neg. Grd. 140°-320°,
Transoptic Illumination
Wire and Terminals
Lighting Kit
Mounting Clamp and Instructions **283-K**

Requires an Electrical Sender:
Unique Drain Plug Sender (280-EH)
Installs easily. See page 30.

Mechanical Oil Temperature Gauge—
150°-320°, Transoptic Lighting,
72" tubing with fittings
Lighting Kit
Mounting Clamp and Instructions **283-C**

VOLTS

Voltmeter 10-16 VDC,
Transoptic Illumination
Wire and Terminals
Lighting Kit
Mounting Clamp and Instructions **283-H**

VACUUM

Vacuum Gauge 0-30", HG
Transoptic Illumination
Installation Kit of 72" Tubing
with Fittings
Lighting Kit
Mounting Clamp and Instructions **283-F**

STAGE 3

FUEL LEVEL

Electric Fuel Level Gauge—
12V Neg. Grd. Transoptic
Illumination

Wire and Terminals

Lighting Kit

Mounting Clamp and Instructions **283-M**

Requires an Electrical Sender:
select from page 30

SPEEDOMETER

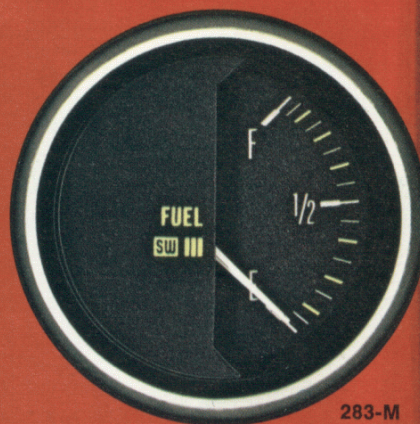
When you want styling that goes all the way with unmatched accuracy, you need this precise speedometer that matches your Stewart-Warner Tach.

With vertical odometer and vertical pointer sweep you can read speed and mileage fast and accurately. Using standard SAE 5/8-18 connections, the speedo is easy to install.

160 MPH Speedometer

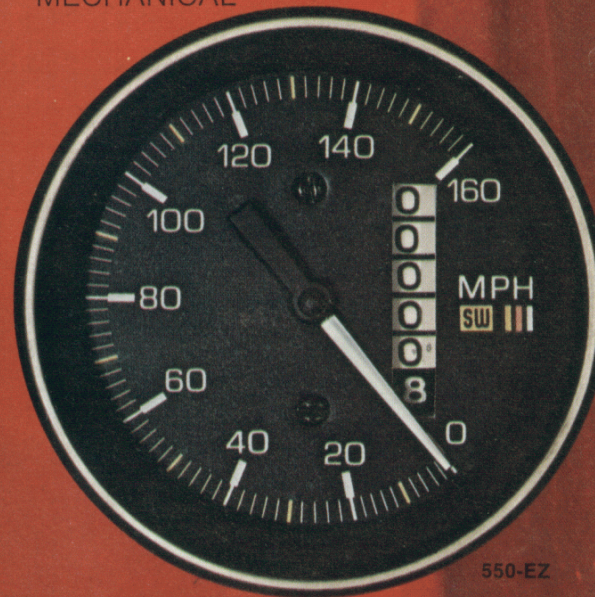
550-EZ

ELECTRICAL



283-M

MECHANICAL



550-EZ

SPEEDOMETER SPECIFICATIONS

MOUNT
Panel

SIZE
3"

RANGE
0-160 MPH

STYLE
250° Vertical Sweep

VERTICAL ODOMETER

FACE DIAL
Background
Black
Numerals
White-Yellow
Accents
White-Yellow
Pointer
White

LIGHTING
Internal Transoptic
Lighting

INSTALLATION
Standard SAE
Connections 5/8-18
Stewart-Warner flex
shaft for mating
Installation may be
required.

STAGE 3

DETAIL TACHOMETER SPECIFICATIONS

MOUNT
In-Panel (Optional Housing, 289-A, Available for Column Dash or Console Mount)

SIZE
3"

RPM RANGE
0-7000-0-9000

FACE DIAL Styling
250° Sweep
Background Black
Numerals Yellow-White
Accents Yellow-White
Pointer White

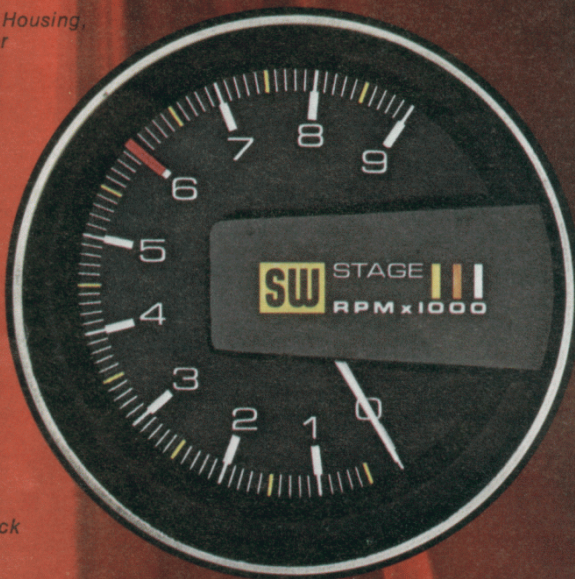
BEZEL
Non-Reflective Black with Satin Trim

LIGHTING
Internal Transoptic

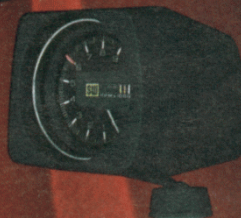
ADJUSTABLE RED LINE

MECHANISM
Jeweled D'Arsonval Movement
Solid State
Amplified Circuitry

ELECTRICAL



997-A



Illustrated in Optional Housing 289-A

TACHOMETERS

Here's the latest in solid state amplified computing circuits combined with an accurate, jeweled d'Arsonval meter movement. You get a new combination of quick reading to match the fastest revving light flywheel engine along with the steady reading needle that lets you use your engine to the utmost with confidence.

- Operates with exotic ignition systems
- Transoptic, non-glare lunar blue light is easy to read and adds an additional quality-feel to your car interior.
- Adjustable red line to set your own critical rpm or shift point. ■ Optional housing and column mount available for other than in-dash use allows new styling options. ■ Compact, easy-to-install single unit design takes little space and protects components from engine heat and vibration.

FOR 6 OR 8 CYLINDER ENGINES

Negative ground only
0-9000 RPM, Panel Mount **997-A**
0-7000 RPM, Panel Mount **997-B**

FOR 4 CYLINDER ENGINES

Negative ground only
0-7000, Panel Mount **997-C**

MODULES WITH GAUGES

These kits combine Stage 3 gauges with 288-A housings. See Stage 3 gauge specifications listed previously.

AMMETER Module Kit Including:

Ammeter
Module Mounting
Lighting Kits **288-B**



STAGE 3

MODULES WITH GAUGES

These kits combine Stage 3 gauges with 288-A housings. See Stage 3 gauge specifications listed previously.

OIL PRESSURE Gauge Module Kit
Including:
Mech. Oil Pressure Gauge
and Installation Kit
Module Mounting
Lighting Kit

288-C

VACUUM Gauge Module Kit Including:
Vacuum Gauge and Installation Kit
Module Mounting
Lighting Kit

288-D

TEMPERATURE Gauge 12V Module Kit
Including:
Temp. Gauge and Sender Kit
Module Mounting
Wire and Terminals
Lighting Kit

288-E



288-C



288-D



288-E

